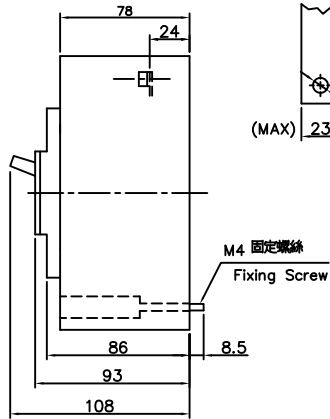
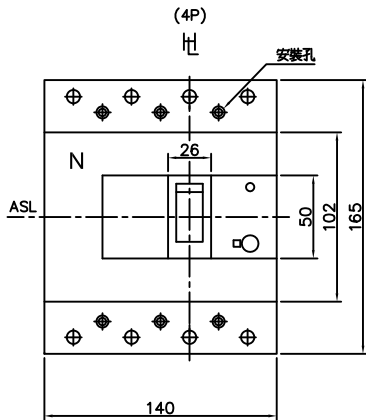
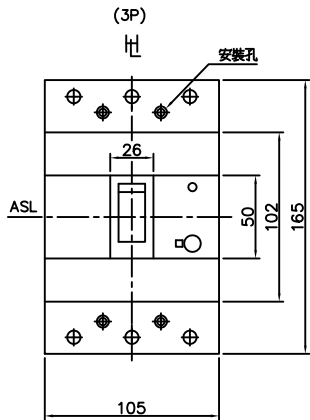
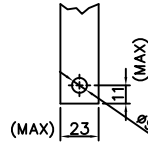


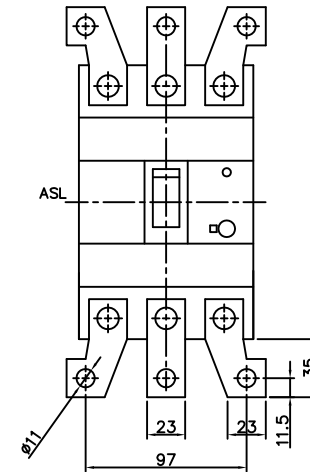
TLB-250S 外形尺寸圖



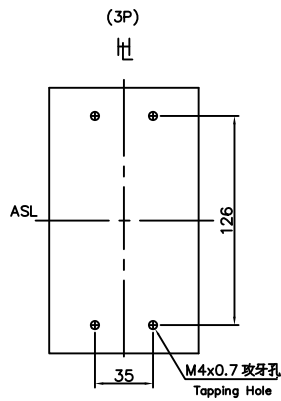
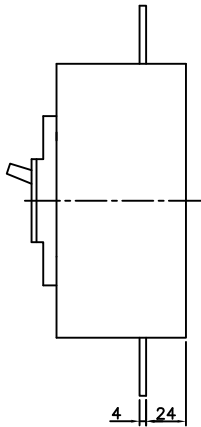
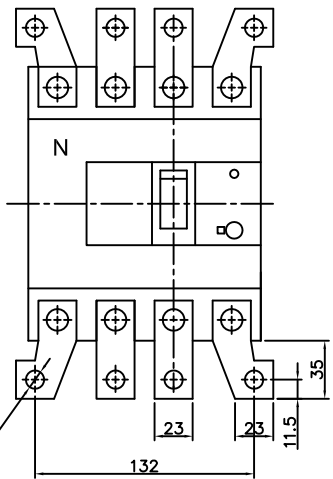
導板準備
Conductor Size



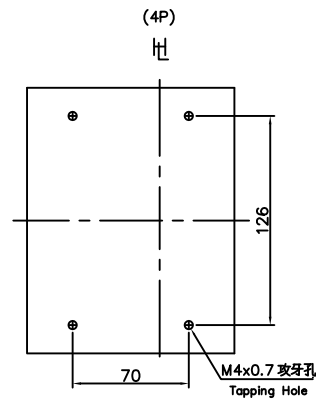
需附裝銅接板(指定時)
When Equipped
with Busbar(Optional)



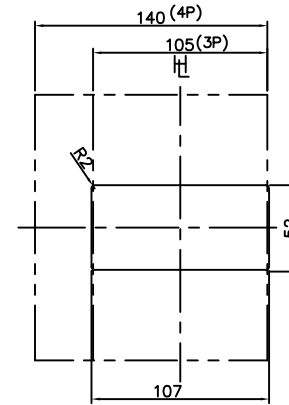
需附裝銅接板(指定時)
When Equipped
with Busbar(Optional)



固定孔位
Drilling Plan



盤面孔面
Panel Cutout



※斷路器尺寸公差為±0.5mm；盤面孔位公差為±1.5mm。