

# \*\*\*CL-10F使用說明書 CL-10F User's Instruction\*\*\*

感謝您選擇東元產品電磁接觸器，請詳細研讀此說明書，並正確使用它。

Thank you for selecting TECO product. Please read this instruction before installation.

## 注意事項 Attention:

–若需要檢修時，應先切斷電源再進行檢修。

Turn off power before carrying out any maintenance.

–使用本產品時，必需小心輕放，避免碰撞及掉落。

Please handle carefully and avoid abnormal vibration and shock.

## 1. 使用環境 Service Environment:

1.1 操作溫度(Operational Temperature):  $-20^{\circ}\text{C}\sim 55^{\circ}\text{C}$ .

1.2 儲存溫度(Storage Temperature):  $-40^{\circ}\text{C}\sim 70^{\circ}\text{C}$ .

1.3 相對濕度(Relative Humidity): 45%~85%.

1.4 高度(Altitude): 低於(below) 2000m.

## 2. 安裝及配線 Installation and Wiring:

2.1 確認電磁接觸器規格(主, 補接點容量, 補接點型式, 線圈電壓, 頻率)是否正確。

Ensure that the specifications (Rated power, arrangement of auxiliary contact, rated control voltage and frequency) meet the requirements.

2.2 配線時依規格選用壓接端子及配線之線徑, 並依序進行配線。

Select appropriate conductor and tighten with appropriate torque with right tool.

2.3 依下表鎖線時, 鎖線扭力值如下:

Tightening torques for contactors are given below:

機種 Type	項目 Item	螺絲尺寸 Screw/blot	鎖緊扭力(kgf.cm) Tighting torque
CL-10F	主迴路端子, 補助接點及線圈端子 Main Terminal Aux. contact & Coil terminal	M3.5	CSA規範值 Spec.
			16

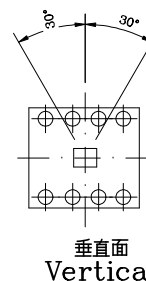
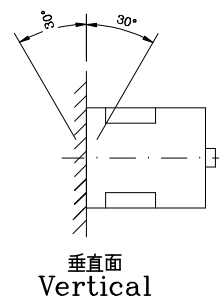
\*鎖線扭力請勿大於上述扭力值, 以免造成螺絲滑牙現象。

Tightening torque shall be within the values given above to avoid deteriorating the screws.

2.4 線圈控制電壓為線圈額定電壓的85%~110%，若高於或低於此範圍都有可能使線圈燒毀。  
The control voltage of the coil 85%~110% of the rated voltage of the coil, if it is higher or lower than this range, the coil may be burned.

2.5 依規定方式安裝, 安裝角度須在下列範圍內:

Mounting positions shall be within the ranges specified below:



## 3. 拆裝或保養維修 Maintenance:

3.1 確認電源關掉後再進行下列動作。

Turn off power before conducting any maintenance.

3.2 將配線依序拆下。Disconnect the wires in sequence.

3.3 依實際情況拆解電磁接觸器進行保養。

Dismantle contactor as required for maintenance.

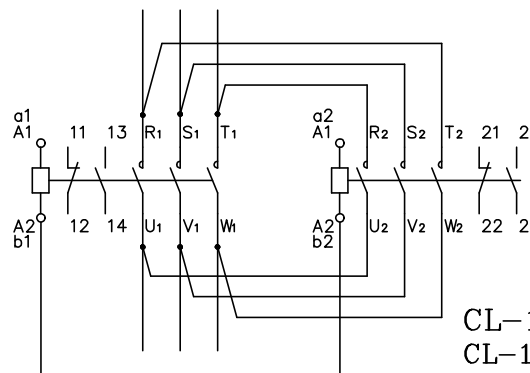
3.4 依3.2, 3.3步驟相反程序將產品重新組合配線。

Assemble and connect the contactor in reverse procedures conducted in steps 3.3 and 3.2.

3.5 確認產品能正常動作。

Check the contactor in a good condition.

## 4. 請依線路圖配線 Please wire according to the diagram



CL-10F線路圖  
CL-10F Wiring Diagram

\* 使用本產品若有不清楚時, 請參閱產品型錄或洽詢公司營業人員。

For more information, please see the catalogue or contact

T 886-03-598-1711 F 03-598-2488 WWW.teco.com.tw

FM3 40A064A102